

RIANA RAOUNA GALLERY

MATETE MARTINI 23 MAY > 05 JUNE


HUG EACH OTHER AGAIN

HUG EACH OTHER
AGAIN ENCAPSULATES
BOTH A PLEA AND AN
INQUIRY, SERVING AS
AN IMPERATIVE THAT
BECKONS INTIMATE
CLOSENESS WITH
ONESELF AND WITH
OTHERS.

IT ISN'T MERELY A
GENTLE COMMAND
AIMED AT RESOLVING
GLOBAL ISSUES BUT

RATHER A CALL TO
RETURN TO OUR
INNER SELVES.
IT URGES US
TO DELVE INTO
OUR QUEST FOR
PROTECTION, TO
DELINEATE WHERE
OUR TRUE SENSE OF
HOME LIES, DEVOID
OF CONSTRAINTS AND
PRECONCEPTIONS.

RIANA RAOUNA GALLERY

WE ARE THE
ARCHITECTS OF OUR
OWN EMBRACE, AND
THROUGH OTHERS,
WE DISCOVER
THE EQUILIBRIUM,
THE DELICATE
BALANCE BETWEEN
CONNECTION AND THE
UNVEILING OF OUR
TRUE SELVES TO THE
WORLD. 

MATETE MARTINI 23 MAY > 05 JUNE
HUG EACH OTHER AGAIN

FINO AD ORA COME ALLORA, BALDININI, MILAN (2024); NONOSTANTE MARRAS, MILAN (2023);
MATETE MARTINI: IL LAVAVETRI, VENICE GLASS WEEK (2023); INCURATA, SOLO SHOW, VENICE
GLASS WEEK (2022); IN PRESENCE, EVERY WOMAN BIENNIAL, LONDON (2021); IN PRESENCE,
TUBE CULTURE HALL, MILAN (2021); RAZZA DI AMBROSIA, ARETÈ SHOWROOM, MILAN (2020);
WORKSBYFRIENDS POP-UP INTERNATIONAL WOMEN'S DAY, LUDLOW HOUSE, NEW YORK
(2019); LACUNA, SOTTO SALE PROJECTS, LONDON (2019); VENICELANDS ART PRICE, ARSENALE
RONCADE, VENICE (2019).

THE RESOLUTION OF THE THEME OF PROTECTION DOESN'T LIE SOLELY WITHIN THE EMBRACE ITSELF; RATHER, THE HUG SERVES AS A SYMBOLIC REPRESENTATION OF THE DUAL ASPECTS INHERENT IN HUMANITY—BOTH THE NEED FOR PROTECTION AND DISTANCE. THESE ASPECTS ARE CONVEYED THROUGH TWO ESSENTIAL ORGANS: THE SKIN AND THE BRAIN. ADDITIONALLY, THE EMBRACE SIGNIFIES A DEDICATION OR A PLEA FOR ATTENTION, SYMBOLIZING THE ARTIST'S RELATIONSHIPS, INCLUDING THOSE WITH THEIR FATHER AND A PAST LOVE. WITH THE PASSAGE OF TIME AND PERSONAL GROWTH, THESE RELATIONSHIPS TRANSFORM INTO A CONCEPT OF EMBRACING ONESELF AND REDISCOVERING AREAS WHERE IMPROVEMENT COULD HAVE BEEN MADE.

THE SYMBOL/ THE METAPHOR OF THE HUG

WHERE WE ANTICIPATE FROM OTHERS A WELCOME, STEEPED IN THE PUREST AND MOST LUCID SENTIMENT THAT WE, AS MAMMALS, INSTINCTIVELY SEEK: PROTECTION OR THE ASSURANCE OF BEING PROTECTED. IN TODAY'S MILIEU OF PERPETUAL INSTABILITY, WHEREIN OUR SURROUNDINGS OFTEN APPEAR INHOSPITABLE AND GRIM, MULTITUDES FLEE IN SEARCH OF A SEMBLANCE OF HOME—A VISTA OVERLOOKING THE SEA, THE THRILL OF TRAVEL, A SENSE OF UNENCUMBERED FREEDOM. THE CONTEMPORARY GARB OF SELF-PRESERVATION AND THE QUEST FOR BELONGING EVOLVES CEASELESSLY.

YET AMIDST THIS FLUX, WHAT REMAINS UNCHANGED? THE PRIMAL YEARNING FOR CONNECTION, MANIFEST MOST PROFOUNDLY IN THE EMBRACE AN ENDURING SYMBOL OF TRANQUILITY AND BELONGING THAT TRANSCENDS THE VENEER OF SOCIETAL CONSTRUCTS AND SHATTERS ANY ILLUSION THAT MERE GESTURES OR WORDS MAY CONJURE. EMBRACING ONE ANOTHER, EMBRACING ANEW. I DEDICATE THIS EXHIBITION TO A CHERISHED INDIVIDUAL, WHOM I'VE EMBRACED COUNTLESS TIMES, AND TO MY FATHER, WITH WHOM, IN LOVE, WE SAFEGUARD ONE ANOTHER OUR EMBRACES, TOO INFREQUENT.

NOTE: These works exemplify the artist's mastery in employing a blend of techniques such as spray varnish, oil painting, and pastels on linen and cotton canvas. Often, the artist utilizes the back of the treated canvas, which she calls *retro canvas*, a tradition she has embraced since 2019 following an exhibition in London. This approach unveils the chromatic dimension of the canvas when painted in reverse, enhancing the warm and natural tones of the canvas.

PAINTINGS

LET US DELVE
INTO THE
CONCEPT OF
HOSPITALITY

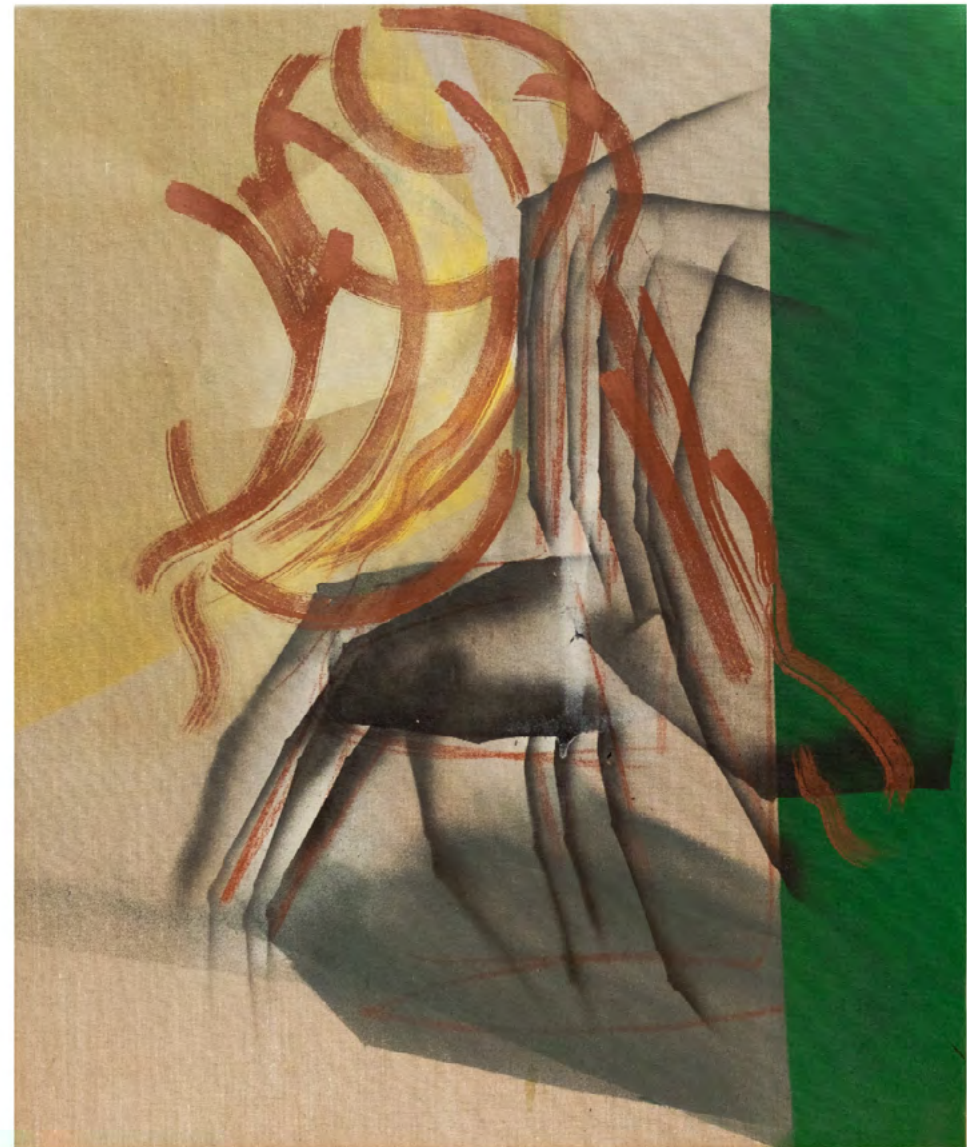


UNCERTAINTY I - Spray varnish, oil paint,
and pastel on linen canvas - 70 x 60 cm





UNCERTAINTY II- Spray varnish, oil paint,
and pastel on linen canvas - 90 x 60 cm



**UNCERTAINTY III THE ACT OF SETTLING
DOWN**- Spray varnish, oil paint, and pastel
on linen canvas - 100 x 90 cm

AN INTIMATE AND
UNIVERSALLY
UNDERSTOOD
SYMBOL
OF ACCEPTANCE

THE EXHIBITION NOTABLY EMBODIES INTIMACY, PORTRAYING AFFECTIONATE GESTURES LIKE SKIN-TO-SKIN CONTACT, SIGNALING A PLEA FOR ATTENTION AND CLOSENESS. THIS PROCESS ORIGINATES FROM THE ACKNOWLEDGMENT OF THE NEED FOR PROTECTION, AND PERHAPS THE HUG STANDS OUT AS THE ONLY LANGUAGE THAT INHERENTLY GRASPS THIS NEED. UNLIKE WORDS OR OTHER FORMS OF EXPRESSION, THE HUG SERVES AS AN INTIMATE AND UNIVERSALLY UNDERSTOOD SYMBOL OF ACCEPTANCE, CONVEYING WARMTH AND CREATING A TEMPORARY YET PROFOUND SENSE OF HOME, AKIN TO AN ARCHITECTURAL STRUCTURE.



HUG EACH OTHER AGAIN - DEDICATED TO GENTI - Spray varnish and pastel on linen canvas - 100 x 90 cm



LOVERS TROUVÉES - Spray varnish on
cotton canvas 150 x 100 cm





LOVERS TROUVÉES II - Spray varnish on
cotton canvas 150 x 120 cm

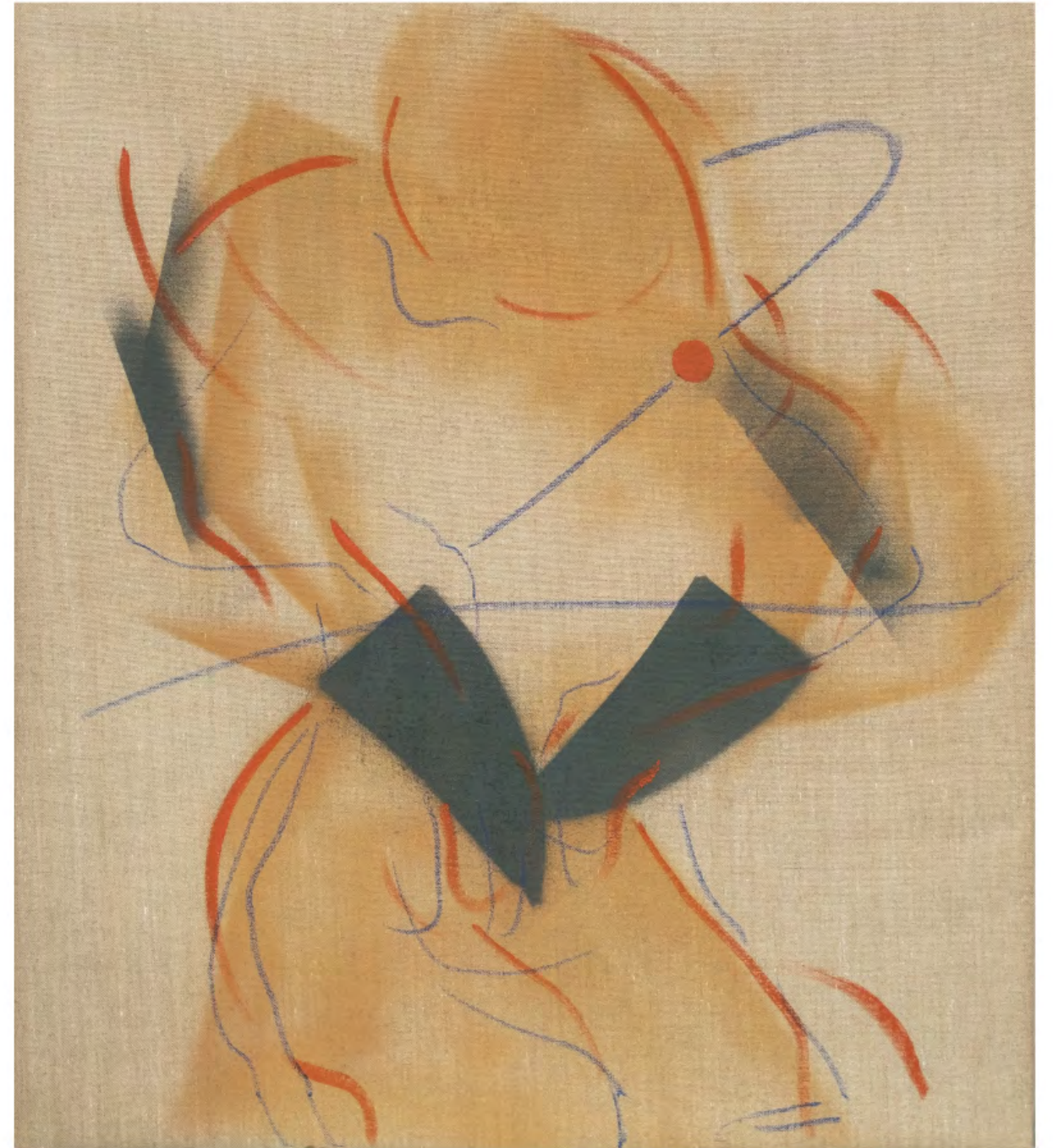


OUR OWN CENTER - DEDICATED TO ELENA ASINS - Spray varnish, oil paint, and pastel on linen canvas - 70 x 60 cm



**FATHER'S HUG - DEDICATED TO
GIANCARLO** - Spray varnish, oil paint, and
pastel on linen canvas - 100 x 70 cm





SELF HUG - Spray varnish and pastel on
linen canvas - 70 x 60 cm

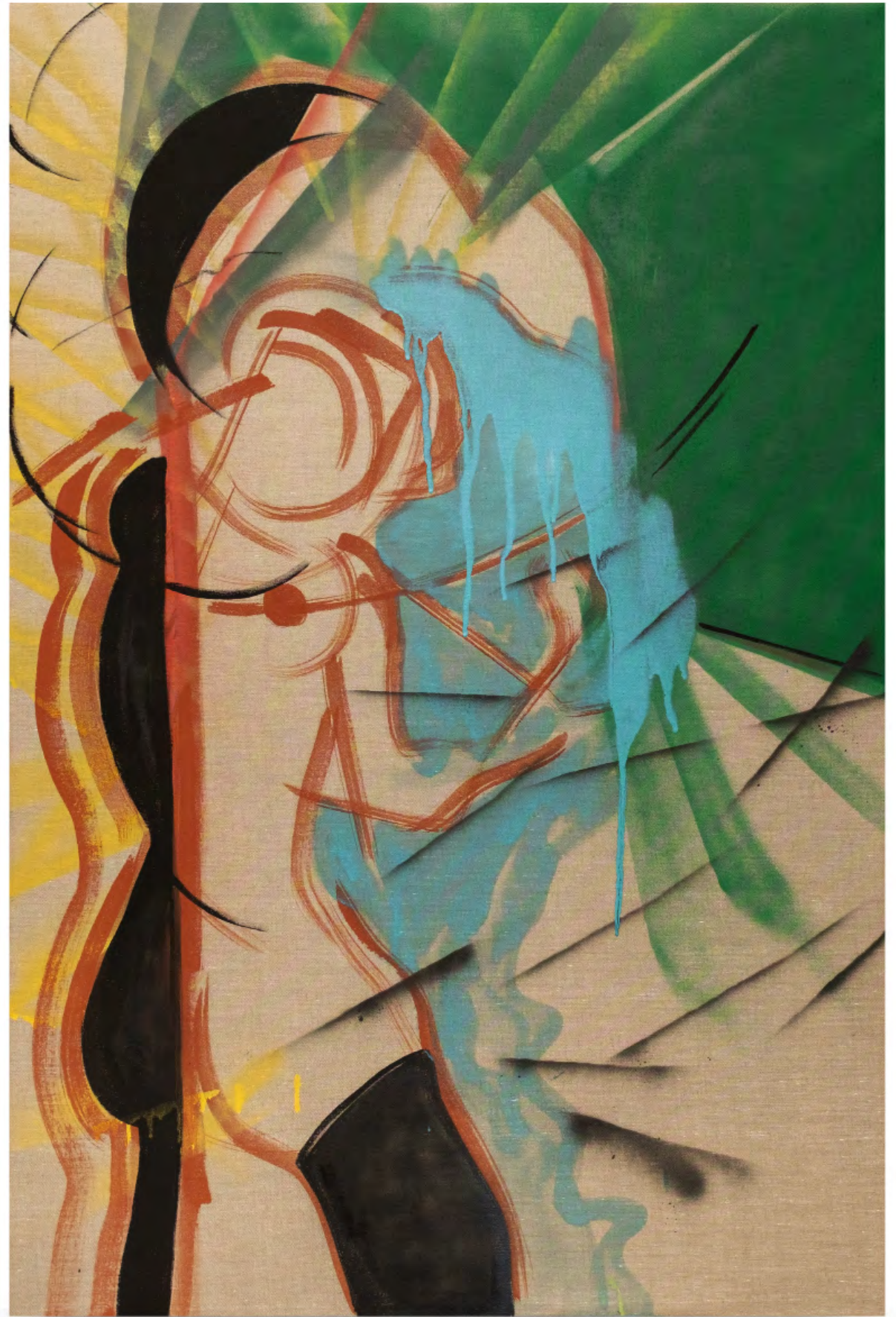


ENFANTS - HOME CONCEPT - Spray
varnish, oil paint, and pastel on linen
canvas - 150 x 100 cm





BLISS - SELF PORTRAIT STUDY - Spray
varnish, oil paint, and pastel on linen
canvas - 120 x 100 cm

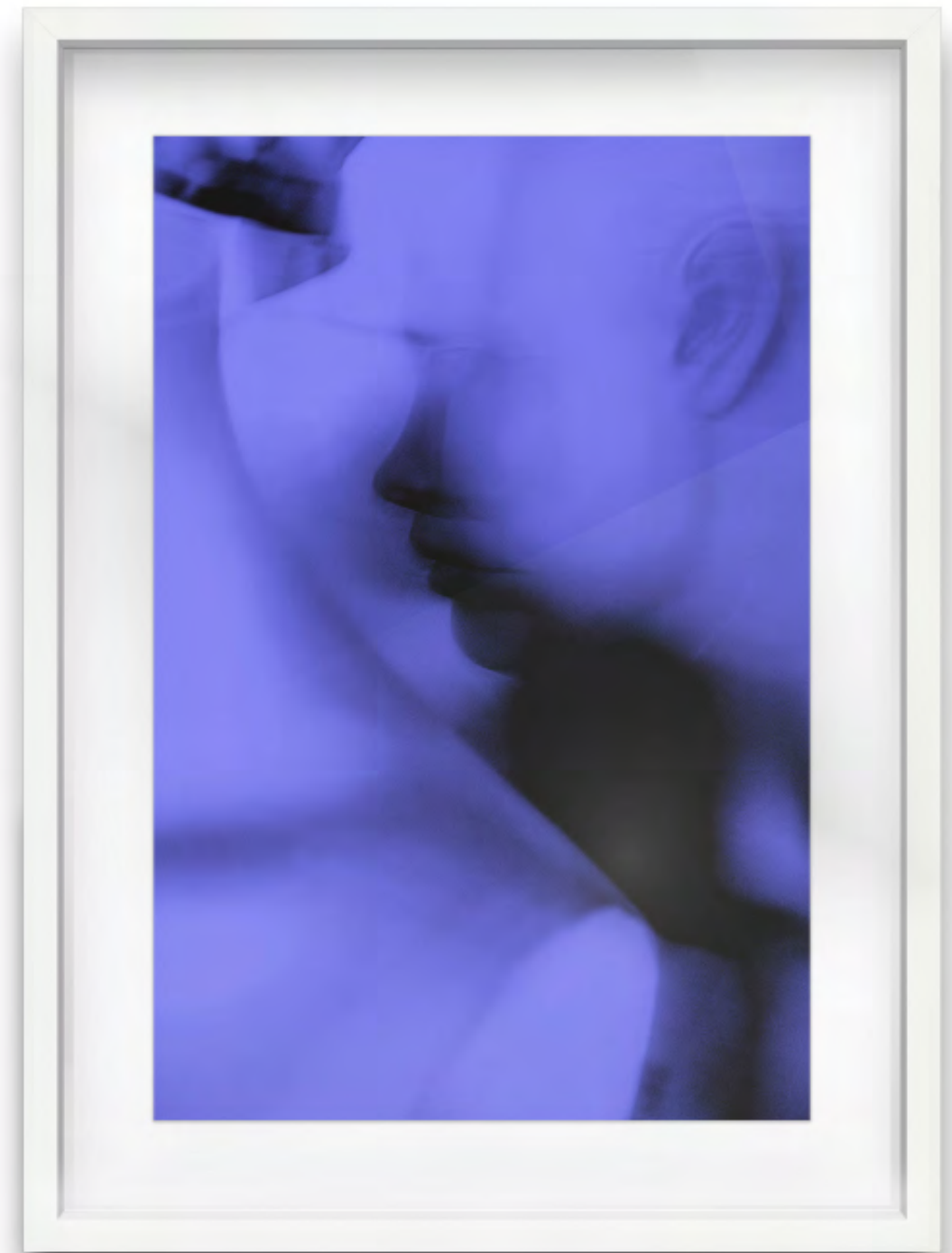


REFUGE - IN THE ACT OF EMBRACING -
Spray varnish, oil paint, and pastel on linen
canvas - 150 x 120 cm



NOTE: The photos were taken during the filming of the artist's 2023 film, 'Beaten Egg.' These images, born from the set, constitute an autobiographical work meticulously printed in Tuscany by the artist's personal supplier on high-quality fine art paper (Center Chrome), framed and prepared for presentation at the exhibition in Nicosia.

PHOTOGRAPHY



KISS I - Photo printed on opaque coated paper edition 1 - 63 x 47 cm



KISS II - Photo printed on opaque coated
paper edition 1 - 63 x 47 cm





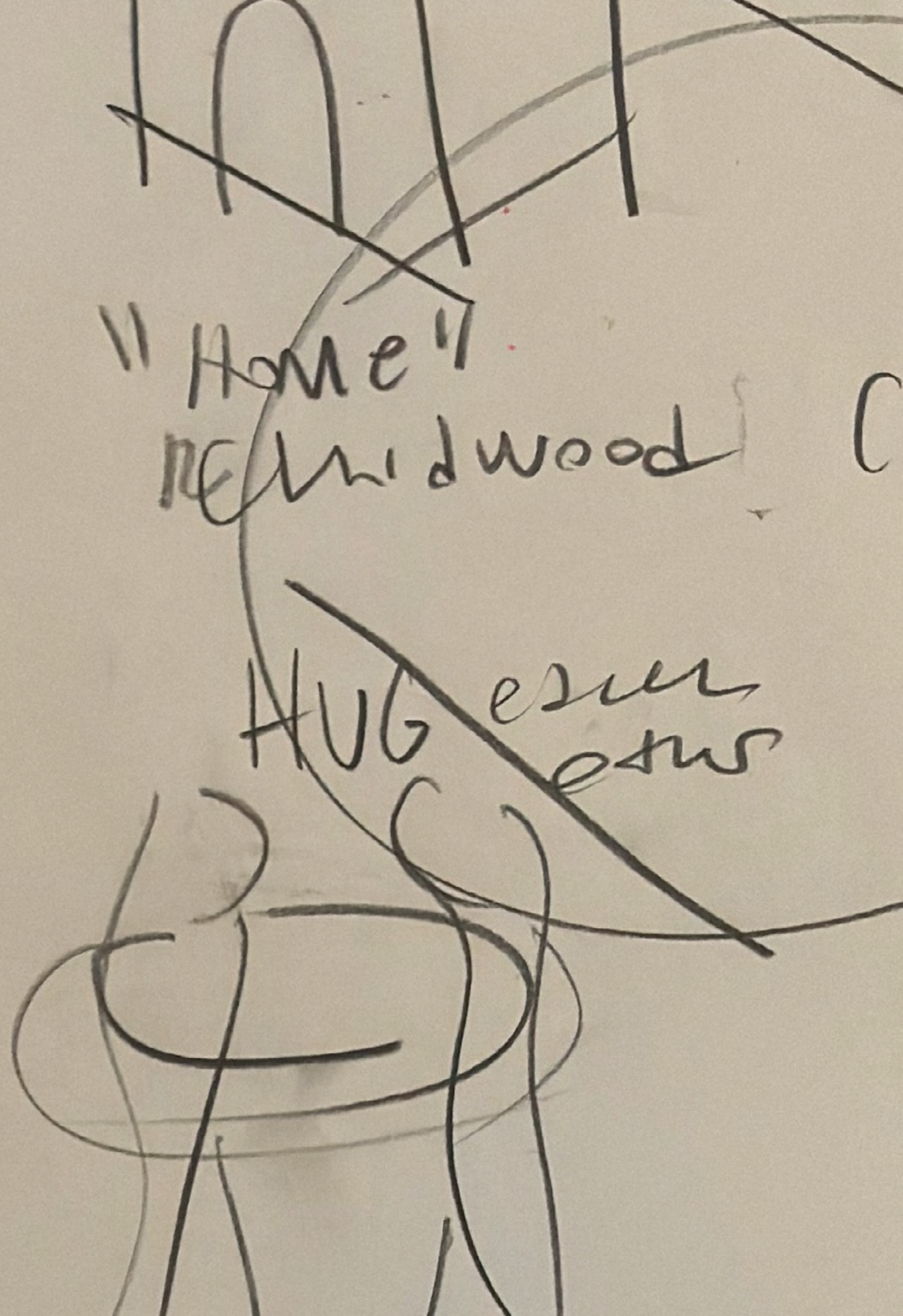
KISS III - Photo printed on opaque coated
paper edition 1 - 63 x 47 cm

NOTE: The sketches, paper works from the exhibition, are unique pieces born during the preparation of the exhibition. They are personal works of the artist with significant design value, representing ideas on paper that were part of the study process. They are original graphic extracts, thoughts, and fetishes that reveal what lies behind the final works, often created while traveling, in the studio, or in social places frequented by the artist.

PAPER ARTWORKS



WE ARE THE ARCHITECTS OF OUR OWN EMBRACE-
Sketch, pigment and oil pastel on paper
- 43 x 34 cm



THE SYMBOL THE METAPHOR OF THE HUG
- Sketch, pencil on paper - 43 x 34 cm



AN INTIMATE SYMBOL OF ACCEPTANCE-
Sketch, pigment and oil pastel on paper -
43 x 34 cm



WE ARE THE ARCHITECTS OF OUR OWN EMBRACE

MATETE MARTINI, BORN IN 1994 IN FRIULI, ITALY, IS AN INTERDISCIPLINARY ARTIST WITH A BACKGROUND IN INTERIOR DESIGN AND VISUAL CULTURE. SHE FOUNDED *FUTUREYOUNGTALENT.COM*, AN INTERNATIONAL WORKSHOP PROGRAM FOSTERING CRITICAL THINKING IN YOUNG ARTISTS. MARTINI'S CURRENT FOCUS SPANS VARIOUS ARTISTIC DISCIPLINES, INCLUDING PAINTING, PERFORMANCE, SCULPTURE, GLASS DESIGN, CINEMA, AND EDUCATION. HER WORK IS SHOWCASED GLOBALLY, DEMONSTRATING BOUNDLESS CREATIVITY AND INNOVATION.



RIANA RAOUNA GALLERY

T +357 22 462888, info@rianaraouna.com, www.rianaraouna.com